

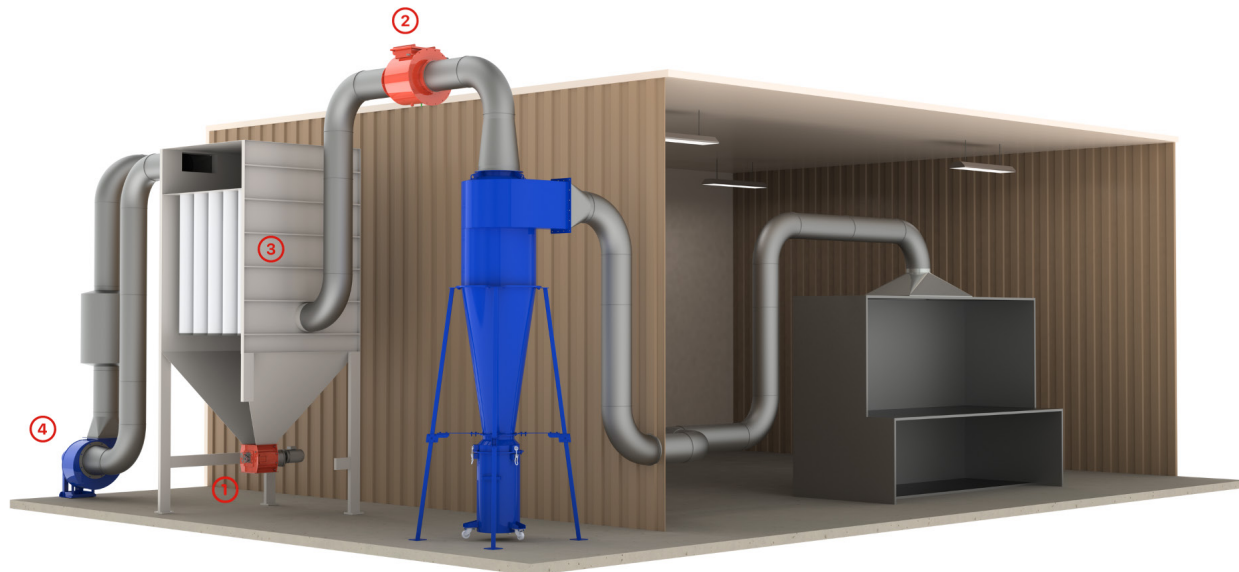
Formula Air

Your one-stop-shop for ATEX Certified Products

At Formula Air, we are dedicated to providing comprehensive solutions that align with the 2014/34/EC ATEX Directive, delivering top-notch protection against the effects of explosions.

Protecting dust extraction system installations

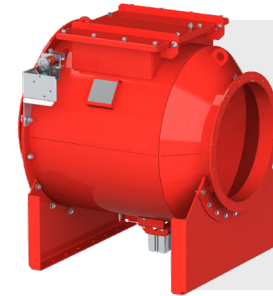
1. RVA-X Rotary Valve;
2. Explosion Isolation Valve;
3. ATEX Filter;
4. ATEX Fan;



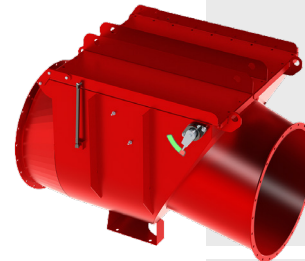
Interested in viewing one of our products?

We would be delighted to arrange a live introduction for you at our Logistics center in Belgium.

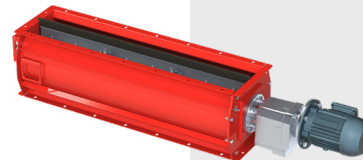
Contact us by scanning the QR code.



BADA-FAB
Explosion isolation valve



BADA-VEX
Explosion isolation valve



RVA-X
Rotary valve

 **Formula Air**
Supporting your performance

Formula Air ATEX certified products

**PROTECTING YOUR
PROCESS AGAINST
EXPLOSIONS**

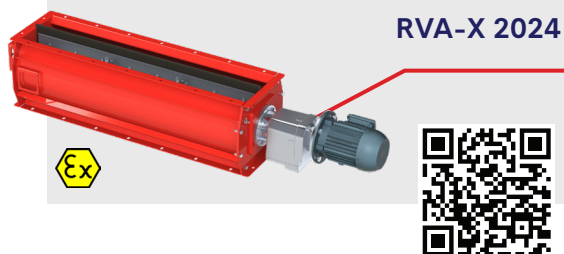


Dust explosion hazard

Combustible dust-air mixtures often occur in pneumatic and mechanical transfer systems handling hazardous particles, such as dust collection systems. Vessels receiving this material are prone to dust explosions.

In today's industrial landscape, where ensuring the safety of personnel and the production facility is paramount, Formula Air offers comprehensive solutions for operating in potentially explosive atmospheres.

ATEX Certified Rotary Valve



The RVA-X rotary valve serves as an ATEX certified protective system by effectively preventing or blocking explosions as well as discharging dust from vessels such as filters, cyclones, silos or other storage units.

- Automated dust discharge
- Easily replaced standard spare parts
- Shipped out within 24 - 48 hrs across the EU

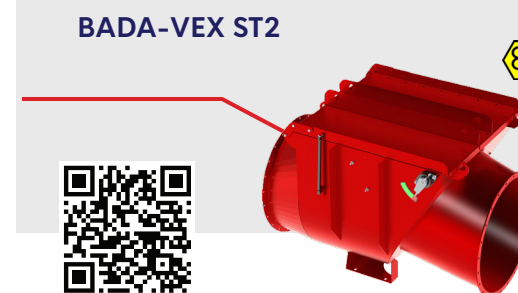
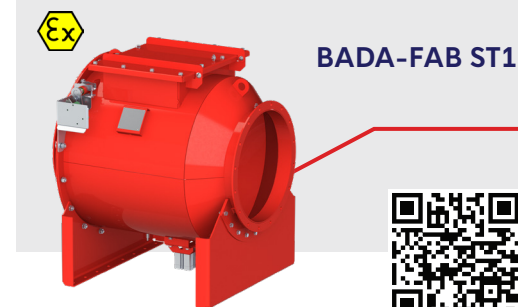
Technical features*

| Properties | RVA-X 2024 |
|-----------------------|---|
| Length (mm) | 250 to 1000 |
| Material | Powder-coated black steel |
| Color | RAL 3020 (red) |
| Temperature range | -20°C up to +60°C |
| Motor power (kW) | 0,37 (RVA1) - 0,55 (RVA2 to RVA4) |
| Rotation speed (RPM) | 19 |
| P-red. max (kPa) | 50-70 |
| ATEX executions | - RVA*-X1-06 : ATEX Zone 20 interior / Zone 21 exterior - RVA*-X2-06 : ATEX Zone 20 interior / Zone 22 exterior - RVA*-X3-06 : ATEX Zone 20 interior / Safe zone exterior |
| Produced according to | - 2014/34/EC : ATEX Directive - 2006/42/EC : Machine Directive - 2014/35/EC : Low voltage Directive - 2014/30/EC : Electromagnetic compatibility Directive |
| Warranty | 1 year |

*See datasheets online for full technical details

ATEX Certified

Explosion Isolation Valves



The BADA explosion isolation valves provide reliable protection against the spread of explosions, safeguarding personnel, equipment and the surrounding environment.

- Handles all kinds of different dusts*
- Wide selection of executions and sizes to fit different industrial processes
- Completely mechanical, requiring practically no maintenance

Technical features*

| Properties | BADA-FAB St 1 | BADA-VEX St 2 |
|-----------------------------|--|--|
| Diameters (mm) | Ø200 to Ø1000 | Ø160 to Ø800 |
| Material | Black steel | Black steel (standard) Galva or AISI (option) |
| Color | RAL 3020 (red) | RAL 3020 (red) |
| Seal | EPDM | EPDM FDA (standard) Silicone (option) |
| Earthing | Two earthing lugs | Earthing bolts and straps included |
| Dust type | Organic and non-metallic | Organic, synthetic and metal |
| Airflow (m/s) | 15 to 35 | 15 to 30/45 (clean*/loaded) |
| Mounting | Horizontal | Horizontal and vertical* |
| Push or pull | Push & pull - up to Ø400 Pull - ø450 to ø1000 | Push & pull all sizes |
| Installation distance (m) | Min. 2.2 to 4 in function of diameter, max. 7 | Min. 3/7 or 5/9*, max. 17 |
| Temperature range | -20°C up to +60°C | -30°C up to +70°C -10°C up to +180°C (optional) |
| Inspection | Door | Door ; Window (optional) |
| Support legs / Lifting eyes | Yes | Yes |
| Position sensor | Yes (Optional Z22 or Z21) | Safe zone included, Z21 optional |
| Dust level sensor | Optional (Z20) | Optional (Z20) |
| Remote unlocking | Yes (optional) | No |

*See datasheets online for full technical details

Product working principle

