



PRICE LIST S23

Fans on Stock

**INDUSTRIAL DUST
EXTRACTION SOLUTIONS**

Introduction

Formula Air works with a broad fan program especially selected to cover a wide range of applications in all types of industries having the following characteristics :

- **Clean air models for :**

Drying, air conditioning, cooling, pressurizing, ventilation, and various gases, dust extraction.

- **Loaded air models for :**

Sawdust, various types of shavings, granular material, fiber material and pneumatic transport or centralized cleaning.

- **Sizes:**

220 up to 2000.

- **Installed motor power :**

from 0,12 kW up to 250 kW.



Standard execution



Standard housing :

Powdercoated polyester electrostatic paint with a thickness of 70 microns but other colors as well as other finishes are available on request. All models are also available in hot-dipped galvanized steel, AISI 304 or AISI 316.

The housing is lockformed in standard executions up to a certain size, beyond this size, they are welded and the orientation can no longer be adapted.

Standard impeller :

Spray painted in gray with a thickness of 50 microns, they are statically and dynamically balanced according to ISO 1940/1.

Standard colors :



Fan housing and chair - RAL 5010



Fan guards - RAL 2002



Fan impeller and accessories - RAL 9007

Disclaimer

The mentioned prices are stated ex-works, excluding VAT and in Euros. The prices in this pricelist are for informational purposes only and are subject to change without prior notice at our convenience. Images of the products used are 3D illustrations. Small deviations are therefore possible. For delivery conditions see our website: www.formula-air.com

Stock fan orientation

All fans on stock are in orientation 0 (upwards) but most can be oriented in another position per your needs.

NOTE : Execution 180 & 225 require special treatments and cannot be done on stock fans.

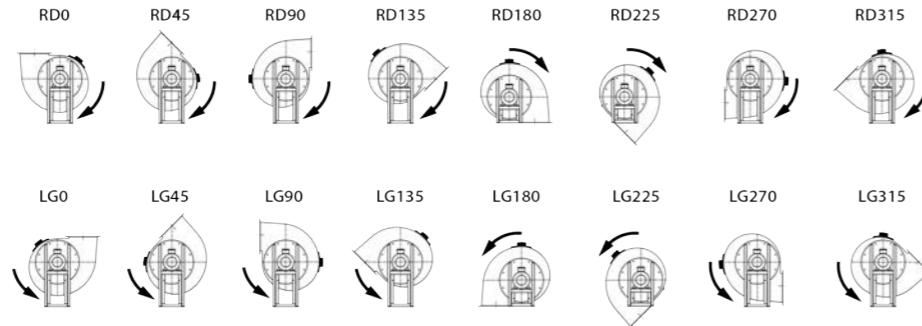


Table of contents

1. Centrifugal fans

4

RL fans | RM fans | GF fans | GR fans | ZM fans | VM fans

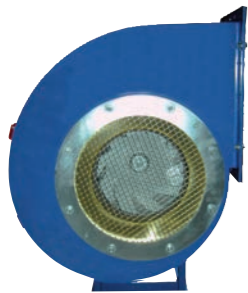
2. Centrifugal fan accessories

12

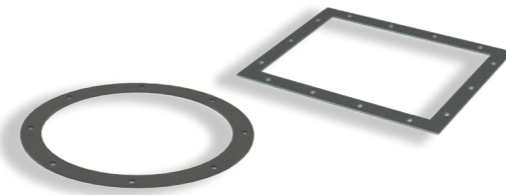
Accessories | Inlet accessories | Outlet accessories | Silent blocks

Fan accessories

A lot of the following accessories are available from stock.



Inlet and outlet grills
to avoid that foreign bodies enter the fan



Inlet and outlet counter-flanges
In galvanized steel. These are to connect your ductwork to the fan.

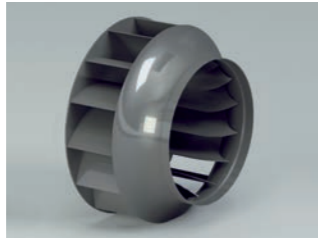
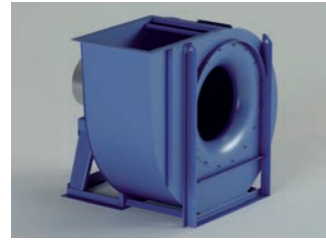


Inlet and outlet flexible connections
for clean or loaded air



Silent blocks
Prevent the transmission of vibrations in the building structure and reduce the lateral and vertical vibration effect

RL fans

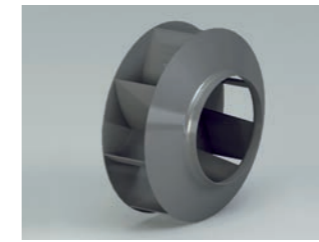
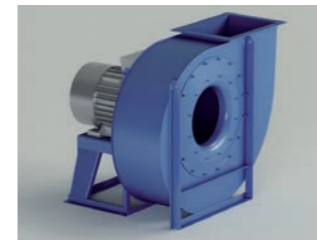


- **Field of operation :**
High capacity / medium-low pressure.
- **Fan wheel type :**
Reversed vanes with cover.
- **Applications :**
Suction and conveyance of clean to slightly dusty air with the exception of filaments. Suitable for a range of applications within industrial and air-conditioning plants.
- **Technical specifications :**
Air volumes : 1.000 to 270.000 m³/h.
Total pressure : 20 up to 460 daPa.

Fan model	Description	Article code	Fan orientation	Air volume [m³/h]		Installed motor [kW]	Number of poles	Application	Price €
				Min. - Max.	Max. - Min.				
RL 280/2	Fan unit: RL 280/2 - RD 0 with Cemer motor: 1.1 kW-3000-2P-Ex4	HBMA000003	RD 0	1500 - 3500	1015 - 334	1,1	2	Clean air	888.88
RL 280/2	Fan unit: RL 280/2 - LG 0 with Cemer motor: 1.1 kW-3000-2P-Ex4	HBMA000004	LG 0	1500 - 3500	1015 - 334	1,1	2	Clean air	888.88
RL 310/2	Fan unit: RL 310/2 - RD 0 with Cemer motor: 2.2 kW-3000-2P-Ex4	HBMA000005	RD 0	2000 - 5300	1375 - 410	2,2	2	Clean air	1114.70
RL 350/2	Fan unit: RL 350/2 - RD 0 with Cemer motor: 3 kW-3000-2P-Ex4	HBMA000007	RD 0	3000 - 7200	1668 - 645	3	2	Clean air	1505.14
RL 400/2R	Fan unit: RL 400/2R - RD 0 with Cemer motor: 4 kW-3000-2P-Ex4	HBMA000009	RD 0	3800 - 6800	2010 - 1400	4	2	Clean air	1773.41
RL 400/2	Fan unit: RL 400/2 - RD 0 with Cemer motor: 5.5 kW-3000-2P-Ex4	HBMA000011	RD 0	4200 - 9000	2210 - 1170	5,5	2	Clean air	2039.22
RL 400/4	Fan unit: RL 400/4 - RD 0 with Cemer motor: 0.75 kW-1500-4P-Ex4	HBMA000027	RD 0	1800 - 4200	510 - 280	0,75	4	Clean air	1360.61
RL 450/2R	Fan unit: RL 450/2R - RD 0 with Cemer motor: 7.5 kW-3000-2P-Ex4	HBMA000013	RD 0	5000 - 11000	2600 - 1265	7,5	2	Clean air	2403.90
RL 450/2	Fan unit: RL 450/2 - RD 0 with Cemer motor: 11 kW-3000-2P-Ex4	HBMA000015	RD 0	5500 - 14500	3030 - 1070	11	2	Clean air	3054.35
RL 500/2R	Fan unit: RL 500/2R - RD 0 with Cemer motor: 15 kW-3000-2P-Ex4	HBMA000017	RD 0	7200 - 18000	3250 - 1230	15	2	Clean air	3477.47
RL 500/2	Fan unit: RL 500/2 - RD 0 with Cemer motor: 18.5 kW-3000-2P-Ex4	HBMA000019	RD 0	8000 - 21000	3670 - 1250	18,5	2	Clean air	3648.88
RL 500/4R	Fan unit: RL 500/4R - RD 0 with Cemer motor: 1.5 kW-1500-4P-Ex4	HBMA000033	RD 0	3600 - 8000	740 - 365	1,5	4	Clean air	1910.94
RL 500/4	Fan unit: RL 500/4 - RD 0 with Cemer motor: 2.2 kW-1500-4P-Ex4	HBMA000035	RD 0	4000 - 10500	860 - 260	2,2	4	Clean air	2016.52
RL 500/4	Fan unit: RL 500/4 - LG 0 with Cemer motor: 2.2 kW-1500-4P-Ex4	HBMA000036	LG 0	4000 - 10500	860 - 260	2,2	4	Clean air	2016.52
RL 560/4	Fan unit: RL 560/4 - RD 0 with Cemer motor: 4 kW-1500-4P	HBMA000039	RD 0	6000 - 15000	1070 - 235	4	4	Clean air	2591.72

! All stock fans are supplied with front support.

RM fans

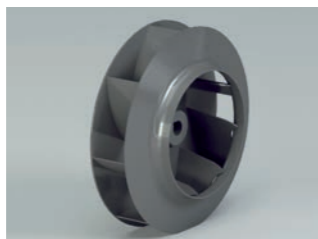
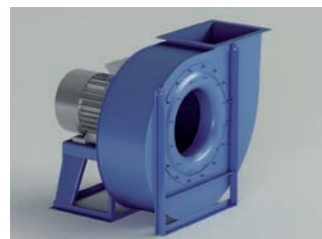


- **Field of operation :**
Medium capacity / medium pressure.
- **Fan wheel type :**
Reversed vanes with cover.
- **Applications :**
Suction and conveyance of clean to very dusty air with the exception of filaments. Including sawdust, various types of shavings, granular material, excepted fibers.
- **Technical specifications :**
Air volumes : 360 up to 180.000 m³/h.
Total pressure : 50 up to 560 daPa.

Fan model	Description	Article code	Fan orientation	Air volume [m³/h]		Installed motor [kW]	Number of poles	Application	Price €
				Min. - Max.	Max. - Min.				
RM 250/2	Fan unit: RM 250/2 - RD 0 with Cemer motor: 0.37 kW-3000-2P-Ex4	HBMA000105	RD 0	480 - 1300	948 - 428	0,37	2	Dusty Air	601.13
RM 280/2R	Fan unit: RM 280/2R - RD0 with Cemer motor: 0.55kW-3000-2P-Ex4	HBMA000107	RD0	500 - 1700	1078 - 335	0,55	2	Dusty Air	678.69
RM 280/2	Fan unit: RM 280/2 - RD 0 with Cemer motor: 0.75 kW-3000-2P-Ex4	HBMA000109	RD 0	600 - 2000	1205 - 350	0,75	2	Dusty Air	726.01
RM 280/2	Fan unit: RM 280/2 - LG 0 with Cemer motor: 0.75 kW-3000-2P-Ex4	HBMA000110	LG 0	600 - 2000	1205 - 350	0,75	2	Dusty Air	726.01
RM 310/2R	Fan unit: RM 310/2R - RD 0 with Cemer motor: 1.1 kW-3000-2P-Ex4	HBMA000111	RD 0	850 - 2600	1520 - 510	1,1	2	Dusty Air	807.68
RM 310/2R	Fan unit: RM 310/2R - LG 0 with Cemer motor: 1.1 kW-3000-2P-Ex4	HBMA000112	LG 0	850 - 2600	1520 - 510	1,1	2	Dusty Air	807.68
RM 310/2	Fan unit: RM 310/2 - RD 0 with Cemer motor: 1.5 kW-3000-2P-Ex4	HBMA000113	RD 0	950 - 2650	1595 - 735	1,5	2	Dusty Air	861.08
RM 310/2	Fan unit: RM 310/2 - LG 0 with Cemer motor: 1.5 kW-3000-2P-Ex4	HBMA000114	LG 0	950 - 2650	1595 - 735	1,5	2	Dusty Air	861.08
RM 350/2R	Fan unit: RM 350/2R - RD 0 with Cemer motor: 1.5 kW-3000-2P-Ex4	HBMA000115	RD 0	950 - 2650	1595 - 735	1,5	2	Dusty Air	999.68
RM 350/2	Fan unit: RM 350/2 - RD 0 with Cemer motor: 2.2 kW-3000-2P-Ex4	HBMA000117	RD 0	1150 - 2300	1840 - 1655	2,2	2	Dusty Air	1034.90
RM 350/2	Fan unit: RM 350/2 - LG 0 with Cemer motor: 2.2 kW-3000-2P-Ex4	HBMA000118	LG 0	1150 - 2300	1840 - 1655	2,2	2	Dusty Air	1034.90
RM 400/2R	Fan unit: RM 400/2R - RD 0 with Cemer motor: 3 kW-3000-2P-Ex4	HBMA000119	RD 0	1800 - 5500	2665 - 765	3	2	Dusty Air	1384.74
RM 400/2	Fan unit: RM 400/2 - RD 0 with Cemer motor: 4 kW-3000-2P-Ex4	HBMA000121	RD 0	1800 - 6000	2800 - 720	4	2	Dusty Air	1479.41
RM 400/2	Fan unit: RM 400/2 - LG 0 with Cemer motor: 4 kW-3000-2P-Ex4	HBMA000122	LG 0	1800 - 6000	2800 - 720	4	2	Dusty Air	1479.41
RM 450/2R	Fan unit: RM 450/2R - RD 0 with Cemer motor: 5.5 kW-3000-2P-Ex4	HBMA000123	RD 0	2700 - 7500	3135 - 865	5,5	2	Dusty Air	1963.62
RM 450/2	Fan unit: RM 450/2 - RD 0 with Cemer motor: 7.5 kW-3000-2P-Ex4	HBMA000125	RD 0	3000 - 8500	3330 - 820	7,5	2	Dusty Air	2132.30
RM 500/2R	Fan unit: RM 500/2R - RD 0 with Cemer motor: 11 kW, 2P-Ex4	HBMA000127	RD 0	3700 - 10500	3670 - 1235	11	2	Dusty Air	2970.35
RM 500/4	Fan unit: RM 500/4 - RD 0 with Cemer motor: 1.5 kW-1500-4P-Ex4	HBMA000137	RD 0	1900 - 5800	915 - 268	1,5	4	Dusty Air	1672.94
RM 560/4	Fan unit: RM 560/4 - RD 0 with Cemer motor: 3 kW-1500-4P-Ex4	HBMA000141	RD 0	2700 - 8500	1175 - 285	3	4	Dusty Air	2265.09

! All stock fans are supplied with front support.

GF fans

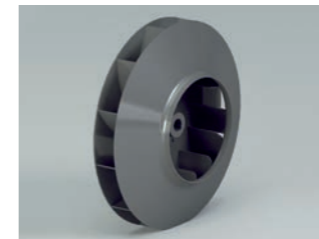
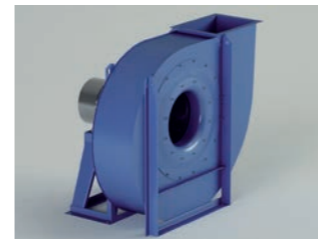


- **Field of operation :**
Medium-high capacity / medium pressure.
- **Fan wheel type :**
Reversed vanes with cover.
- **Applications :**
Suction and conveyance of clean to dusty air with the exception of filaments. Low quantities of sawdust, various types of shavings, granular material, excepted fibers.
- **Technical specifications :**
Air volumes : 360 up to 216.000 m³/h.
Total pressure : 70 up to 915 daPa.

Fan model	Description	Article code	Fan orientation	Air volume [m ³ /h]		Static Pressure [Pa]st		Installed motor [kW]	Number of poles	Application	Price €
				Min. - Max.	Max. - Min.	Max. - Min.	Max. - Min.				
GF 250/2	Fan unit: GF 250/2 - RD 0 with Cemer motor: 0.37 kW-3000-2P-Ex4	HBMA000191	RD 0	450 - 1150	880 - 640	0,37	2	Dusty Air	622.13		
GF 280/2	Fan unit: GF 280/2 - RD 0 with Cemer motor: 0.55 kW-3000-2P-Ex4	HBMA000193	RD 0	450 - 1520	1115 - 820	0,55	2	Dusty Air	699.69		
GF 310/2	Fan unit: GF 310/2 - RD 0 with Cemer motor: 1.1 kW-3000-2P-Ex4	HBMA000195	RD 0	800 - 2200	1495 - 1235	1,1	2	Dusty Air	831.48		
GF 350/2	Fan unit: GF 350/2 - RD 0 with Cemer motor: 2.2 kW-3000-2P-Ex4	HBMA000197	RD 0	1050 - 3000	1940 - 1630	2,2	2	Dusty Air	1068.50		
GF 400/2	Fan unit: GF 400/2 - RD 0 with Cemer motor: 4 kW-3000-2P-Ex4	HBMA000199	RD 0	1600 - 4300	2500 - 2100	4	2	Dusty Air	1555.01		
GF 450/2R	Fan unit: GF 450/2R - RD 0 with Cemer motor: 5.5 kW-3000-2P-Ex4	HBMA000201	RD 0	2400 - 7500	3020 - 1485	5,5	2	Dusty Air	2063.02		
GF 450/2	Fan unit: GF 450/2 - RD 0 with Cemer motor: 5.5 kW-3000-2P-Ex4	HBMA000203	RD 0	2700 - 5500	3310 - 2740	5,5	2	Dusty Air	2063.02		
GF 500/2	Fan unit: GF 500/2 - RD 0 with Cemer motor: 11 kW-3000-2P-Ex4	HBMA000207	RD 0	3800 - 10000	4100 - 2610	11	2	Dusty Air	3087.95		

! All stock fans are supplied with front support.

GR fans

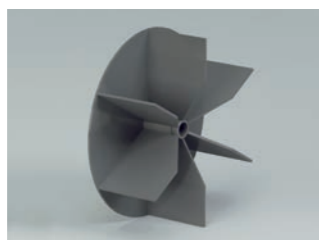
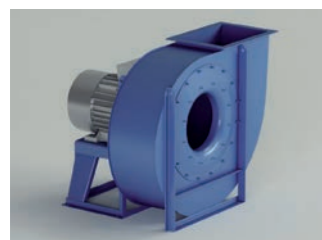


- **Field of operation :**
Medium capacity / medium-high pressure.
- **Fan wheel type :**
Reversed vanes with cover.
- **Applications :**
Suction and conveyance of clean to slightly dusty air with the exception of filaments. Suitable for conveying solid materials mixed with air, shavings and sawdust.
- **Technical specifications :**
Air volumes : 1.500 up to 140.000 m³/h.
Total pressure : 150 up to 1.100 daPa.

Fan model	Description	Article code	Fan orientation	Air volume [m ³ /h]		Static Pressure [Pa]st		Installed motor [kW]	Number of poles	Application	Price €
				Min. - Max.	Max. - Min.	Max. - Min.	Max. - Min.				
GR 400/2	Fan unit: GR 400/2 - RD 0 with Cemer motor: 3 kW-3000-2P-Ex4	HBMA000345	RD 0	1500 - 4100	2570 - 1300	3	2	Smoke, fine dust	1477.14		
GR 450/2R	Fan unit: GR 450/2R - RD 0 with Cemer motor: 4 kW-3000-2P-Ex4	HBMA000351	RD 0	2050 - 4500	3090 - 1935	4	2	Smoke, fine dust	1781.81		
GR 450/2	Fan unit: GR 450/2 - RD 0 with Cemer motor: 5.5 kW-3000-2P-Ex4	HBMA000349	RD 0	2200 - 6000	3420 - 1430	5,5	2	Smoke, fine dust	2047.62		
GR 500/2R	Fan unit: GR 500/2R - RD 0 with Cemer motor: 7.5 kW-3000-2P-Ex4	HBMA000355	RD 0	2500 - 7500	3990 - 1575	7,5	2	Smoke, fine dust	2412.30		

! All stock fans are supplied with front support.

ZM fans



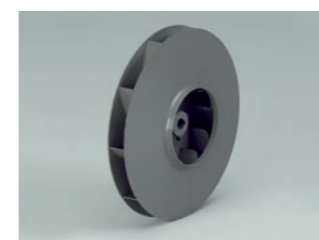
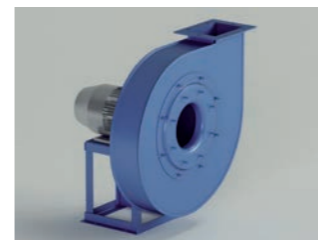
- **Field of operation :**
Medium capacity / medium pressure.
- **Fan wheel type :**
Straight radial vanes, open.
- **Applications :**
Suction and conveyance of very dusty air. With material in suspension, including air containing sawdust, various types of shavings, granular materials and filaments.
- **Technical specifications :**
Air volumes : 200 up to 65.000 m³/h.
Total pressure : 300 up to 500 daPa.

Fan model	Description	Article code	Fan orientation	Air volume [m ³ /h]		Static Pressure [Pa]st		Installed motor [kW]	Number of poles	Application	Price €
				Min. - Max.	Max. - Min.						
ZM 310/2	Fan unit: ZM 310/2 - RD 0 with Cemer motor: 2.2 kW-3000-2P-Ex4	HBMA000465	RD 0	800 - 2150	1565 - 1010	2,2	2	Solid materials	893.50		
ZM 350/2R	Fan unit: ZM 350/2R - RD 0 with Cemer motor: 3 kW-3000-2P-Ex4	HBMA000471	RD 0	1100 - 2500	1770 - 1270	3	2	Solid materials	1212.54		
ZM 350/2	Fan unit: ZM 350/2 - RD 0 with Cemer motor: 4 kW-3000-2P-Ex4	HBMA000469	RD 0	1400 - 3500	2055 - 1150	4	2	Solid materials	1307.21		
ZM 400/2	Fan unit: ZM 400/2 - RD 0 with Cemer motor: 7.5 kW-3000-2P-Ex4	HBMA000473	RD 0	2500 - 5400	2570 - 1340	7,5	2	Solid materials	1908.30		

ZM fan range includes the welded casing and shaft sealing.

! All stock fans are supplied with front support.

VM fans



- **Field of operation :**
Low-medium capacity / high-very high pressure.
- **Fan wheel type :**
Bent vanes or reversed vanes with cover.
- **Applications :**
Suction and conveyance of clean air. With material not transiting through fan for pneumatic transport, dust, drying, pressurizing and cooling.
- **Technical specifications :**
Air volumes : 360 up to 110.000 m³/h.
Total pressure : 100 up to 2.200 daPa.

Fan model	Description	Article code	Fan orientation	Air volume [m ³ /h]		Static Pressure [Pa]st		Installed motor [kW]	Number of poles	Application	Price €
				Min. - Max.	Max. - Min.						
VM 350/2	Fan unit: VM 350/2 - RD 0 with Cemer motor: 1.1 kW-3000-2P-Ex4	HBMA000281	RD 0	400 - 1550	2090 - 750	1,1	2	Smoke, fine dust	881.88		
VM 400/2R	Fan unit: VM 400/2R - RD 0 with Cemer motor: 1.5 kW-3000-2P-Ex4	HBMA000287	RD 0	500 - 1850	2370 - 970	1,5	2	Smoke, fine dust	1054.28		
VM 400/2	Fan unit: VM 400/2 - RD 0 with Cemer motor: 2.2 kW-3000-2P-Ex4	HBMA000285	RD 0	600 - 2400	2870 - 910	2,2	2	Smoke, fine dust	1089.50		
VM 400/2	Fan unit: VM 400/2 - LG 0 with Cemer motor: 2.2 kW-3000-2P-Ex4	HBMA000286	LG 0	600 - 2400	2870 - 910	2,2	2	Smoke, fine dust	1089.50		
VM 450/2R	Fan unit: VM 450/2R - RD 0 with Cemer motor: 3 kW-3000-2P-Ex4	HBMA000291	RD 0	700 - 2800	3115 - 1130	3	2	Smoke, fine dust	1495.34		
VM 450/2	Fan unit: VM 450/2 - RD 0 with Cemer motor: 4 kW-3000-2P-Ex4	HBMA000289	RD 0	850 - 3500	3595 - 1005	4	2	Smoke, fine dust	1590.01		
VM 500/2	Fan unit: VM 500/2 - RD 0 with Cemer motor: 5.5 kW-3000-2P-Ex4	HBMA000293	RD 0	1150 - 4200	4500 - 2200	5,5	2	Smoke, fine dust	2035.02		

! All stock fans are supplied with front support.

Accessories

- Fan inlets are composed of a standard inlet flange (page 13) and a standard galva taper.
- The prices include loose inlet flange flange (L.fl)



Fan inlet in 1 mm galva - L.fl / fb

Fan inlet diameter (Ø mm)	Taper inlet diameter	Inlet flange code (page 13)	Galva taper code	Price €
185x8	160	HIAC000016	AAEA000028	79 €
205x8	180	HIAC000017	AAEA000035	86 €
228x8	200	HIAC000018	AAEA000043	99 €
255x8	225	HIAC000001	AAEA000052	111 €
285x8	250	HIAC000003	AAEA000062	119 €
320x8	300	HIAC000004	AAEA000085	132 €
360x8	315	HIAC000005	AAEA000098	146 €
405x12-8	350	HIAC000006	AAEA000112	166 €
455x12-8	400	HIAC000007	AAEA000127	187 €
505x12-8	450	HIAC000008	AAEA000142	216 €
565x12-16	500	HIAC000009	AAEA000156	242 €
635x12-16	600	HIAC000010	AAEA000180	304 €
715x16	650	HIAC000011	AAEA000242	448 €
805x16	750	HIAC000012	AAEA000244	457 €
905x16	850	HIAC000013	AAEA000246	576 €

- Fan outlet prices for 1mm include direct flange (D.fl)



Fan outlet in 1 mm galva - D.fl / fb

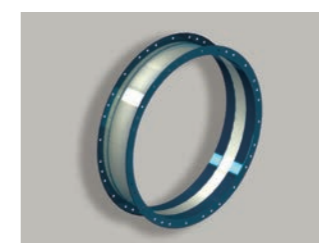
Fan side dimensions (mm)	Outlet diameter (Ø mm)	Article code	Price €
131x95	160	HJEA000090	160 €
146x105	200	HJEA000091	141 €
166x117	250	HJEA000092	165 €
185x131	250	HJEA000093	165 €
207x148	250	HJEA000094	195 €
231x166	200	HJEA000003	207 €
258x185	250	HJEA000004	207 €
288x205	250	HJEA000005	232 €
322x229	300	HJEA000006	238 €
361x256	350	HJEA000007	238 €
404x288	350	HJEA000008	251 €
453x322	400	HJEA000009	268 €
507x361	450	HJEA000010	268 €
569x404	500	HJEA000011	342 €
638x453	600	HJEA000012	354 €

! Other sizes available on request

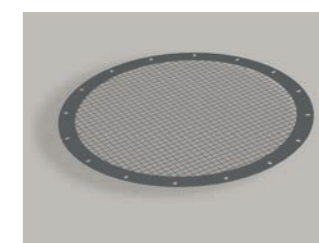
Inlet accessories



INF inlet counter-flanges



GA3 inlet flexible connections

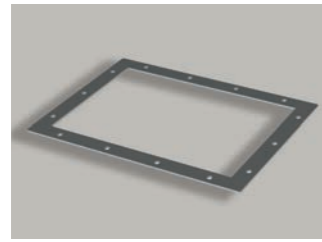


RETA inlet protection grills

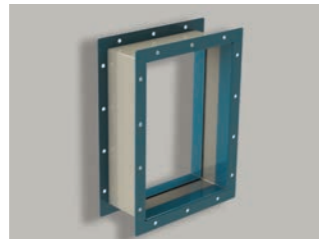
Size	INF		GA3		RETA	
	Code	Price €	Code	Price €	Code	Price €
185x8	HIAC000016	29 €	HIBA000004	269 €	HIDA000004	53 €
205x8	HIAC000017	32 €	HIBA000005	269 €	HIDA000005	56 €
228x8	HIAC000018	39 €	HIBA000006	269 €	HIDA000006	67 €
255x8	HIAC000001	45 €	HIBA000007	269 €	HIDA000007	74 €
285x8	HIAC000003	47 €	HIBA000008	269 €	HIDA000008	81 €
320x8	HIAC000004	52 €	HIBA000009	269 €	HIDA000009	87 €
360x8	HIAC000005	56 €	HIBA000010	284 €	HIDA000010	94 €
405x12-8	HIAC000006	64 €	HIBA000011	316 €	HIDA000011	104 €
455x12-8	HIAC000007	72 €	HIBA000012	350 €	HIDA000012	111 €
505x12-8	HIAC000008	76 €	HIBA000013	379 €	HIDA000013	123 €
565x12-16	HIAC000009	84 €	HIBA000014	442 €	HIDA000014	132 €
635x12-16	HIAC000010	106 €	HIBA000015	491 €	HIDA000015	160 €
715x16	HIAC000011	136 €	HIBA000016	557 €	HIDA000016	200 €
805x16	HIAC000012	152 €	HIBA000017	631 €	HIDA000017	213 €
905x16	HIAC000013	186 €	HIBA000018	711 €	HIDA000018	258 €

! Other sizes available on request

Outlet accessories



OUF outlet counter-flanges



GP3 outlet flexible connections

Size	OUF		GP3	
	Code	Price €	Code	Price €
146x105	HJAC000001	18 €	HJBA000006	225 €
166x117	HJAC000002	18 €	HJBA000007	246 €
185x131	HJAC000003	30 €	HJBA000008	246 €
207x148	HJAC000004	26 €	HJBA000009	269 €
231x166	HJAC000005	27 €	HJBA000010	269 €
258x185	HJAC000006	29 €	HJBA000011	269 €
288x205	HJAC000007	29 €	HJBA000012	269 €
322x229	HJAC000008	38 €	HJBA000013	269 €
361x256	HJAC000009	40 €	HJBA000014	269 €
404x288	HJAC000010	52 €	HJBA000015	284 €
453x322	HJAC000011	64 €	HJBA000016	316 €
507x361	HJAC000012	75 €	HJBA000017	350 €
569x404	HJAC000013	80 €	HJBA000018	379 €
638x453	HJAC000014	96 €	HJBA000019	413 €
715x507	HJAC000015	108 €	HJBA000020	442 €
801x569	HJAC000016	129 €	HJBA000021	475 €
898x638	HJAC000017	153 €	HJBA000022	557 €
1007x715	HJAC000018	182 €	HJBA000023	631 €

! Other sizes available on request

Silent blocks



Thread size per model :

- AV2-25 with M6 thread
- AV2-40 with M8 thread
- AVC-60 with M10 thread
- AVC-90 with M16 thread
- AVC-120 with M16 thread

Fan size	RM - RL - RH - GR - G F - CA - ZM - Z				VM - ZB - VI - VG				VP - ZA - VC - VA			
	Model	Reference	Qty	Unit price €	Model	Reference	Qty	Unit price €	Model	Reference	Qty	Unit price €
200	AV2-25	HFAA000002	6	13 €	-	-	-	-	-	-	-	-
220	AV2-25	HFAA000002	6	13 €	-	-	-	-	-	-	-	-
250	AV2-25	HFAA000002	6	13 €	-	-	-	-	-	-	-	-
280	AV2-25	HFAA000002	6	13 €	-	-	-	-	-	-	-	-
310	AV2-25	HFAA000002	6	13 €	-	-	-	-	AV2-25	HFAA000002	6	13 €
350	AV2-25	HFAA000002	6	13 €	AV2-25	HFAA000002	6	13 €	AV2-25	HFAA000002	6	13 €
400	AV2-40	HFAA000004	6	20 €	AV2-25	HFAA000002	6	13 €	AV2-25	HFAA000002	6	13 €
450	AV2-40	HFAA000004	6	20 €	AV2-40	HFAA000004	6	20 €	AV2-25	HFAA000002	6	13 €
500	AV2-40	HFAA000004	6	20 €	AV2-40	HFAA000004	6	20 €	AV2-40	HFAA000004	6	20 €
560	AVC-60	HFAA000005	6	38 €	AV2-40	HFAA000004	6	20 €	AV2-40	HFAA000004	6	20 €
630	AVC-60	HFAA000005	6	38 €	AV2-40	HFAA000004	6	20 €	AV2-40	HFAA000004	6	20 €
710	AVC-60	HFAA000005	6	38 €	AVC-60	HFAA000005	6	38 €	AVC-60	HFAA000005	6	38 €
800	AVC-60	HFAA000005	6	38 €	AVC-60	HFAA000005	6	38 €	AVC-60	HFAA000005	6	38 €
900	AVC-60	HFAA000005	6	38 €	AVC-90	HFAA000006	6	53 €	AVC-60	HFAA000005	6	38 €
1000	AVC-90	HFAA000006	6	53 €	AVC-90	HFAA000006	6	53 €	AVC-90	HFAA000006	6	53 €
1120	AVC-90	HFAA000006	6	53 €	-	-	-	-	AVC-90	HFAA000006	6	53 €
1250	AVC-120	HFAA000007	6	116 €	-	-	-	-	-	-	-	-
1400	AVC-120	HFAA000007	6	116 €	-	-	-	-	-	-	-	-

! All stock fans are assembled with a front support and require 6 silent blocks.



Contacts

Formula Air The Netherlands
Head Office / Production / Sales
Bosscheweg 36
5741 SX Beek en Donk
The Netherlands
+31 (0) 492 45 15 00
info-nl@formula-air.com

Formula Air Belgium
Logistics / Sales
Rue des Dizeaux 4
1360 Perwez
Belgium
+32 81 23 45 71
info-be@formula-air.com

Formula Air Baltic
Production / Sales
P. Motiekaičio g. 3
LT-77104 Šiauliai
Lithuania
+370 41 54 04 82
info-lt@formula-air.com

Formula Air Germany
Sales
Dr.-Oetker Straße 10
54516 Wittlich
Germany
+49 6571 269860
info-de@formula-air.com

Formula Air France – North
Sales
Zac de la Carrière Dorée
BP 105, 59310 Orchies
France
+33 9 72 15 29 38
contact-fr@formula-air.com

Formula Air France – West
Sales
6, avenue des Lions
44800 Saint-Herblain
France
+33 9 72 15 29 38
contact-ouest@formula-air.com

Formula Air France – South
Sales
Chemin de Peyrecave
09600 Regat
France
+33 9 72 15 29 38
contact-sud@formula-air.com

Formula Air Nordic
Sales
Stortorget 17
211 22 Malmö
Sweden
+46 40 654 06 10
info-scan@formula-air.com

Formula Air Vietnam
Production / Sales
#33, Lot 2, Den Lu 1
Hoang Mai District, Hanoi
Vietnam
+84 (24) 38 62 68 01
info@vinaduct.com

Formula Air Export
Sales
Rue des Dizeaux 4
1360 Perwez
Belgium
+32 81 23 45 71
info-be@formula-air.com